

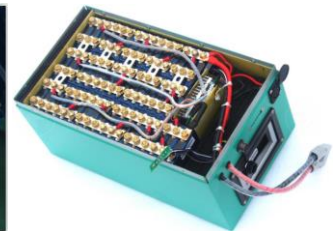
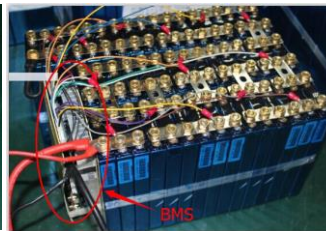


Best LiFePO4



Config 1: Battery Cell 3.2V20Ah

Photo show as below.



The Unit high quality prismatic energy storage cell base on aluminum housing cells, good for battery cells cooling when the battery pack are working on very large continue large current. The perfect protection for unit cell, Ensure real implement long time use life and excellent performance. Unit Power Cell cycle life more than 2800times 100%DOD1C non-pollution, real green batteries.

Nominal Voltage	3.2V	Design Cycle life(0.2C/80%DOD)	More than 2800times
Nominal Capacity	20Ah	Operating temperature	Charge Discharge
Combination	1 unit		0°C~55°C -20°C~55°C
Charge cut-off voltage	3.65V	Charge Method	CC-CV
Discharge cut-off voltage	2.5V ~ 2.0V	Weight of Battery cell 3.2V20Ah	550g
1C,3.1V/discharge voltage plateau	≥95%	Dimension of module	Thickness: 22mm
Max charge current	60A		Width: 90mm
Max discharge current	100A		Height: 148mm